


SPOKANE VALLEY SNOWPLOW AVL

Aaron Clary (Spokane Valley)
Andy Shaw (EnterInfo)

Spokane Valley Demographics

- Avg snowfall = 51 inches per year
- Elevation = 2,000 – 2,400 ft
- Population = 90,000
- Size = 38 sq miles
- Incorporated in 2003



eRoadTrack AVL System

- Implemented in 2009
- Used for 2 winters so far
- 8 snowplow trucks
- 4 Sweepers
- Real-time tracking

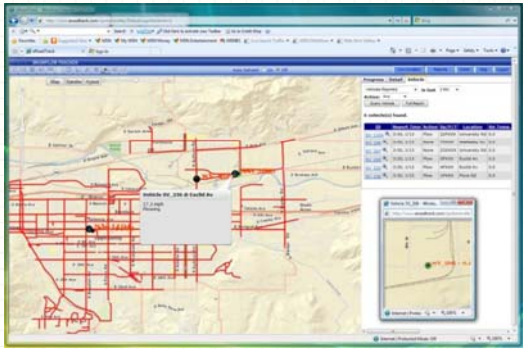
In-vehicle Equipment

- eRoadTrack MDT
- GPS
- Plow Sensor
- Spreader Interface
- Wireless Modem
- Antenna

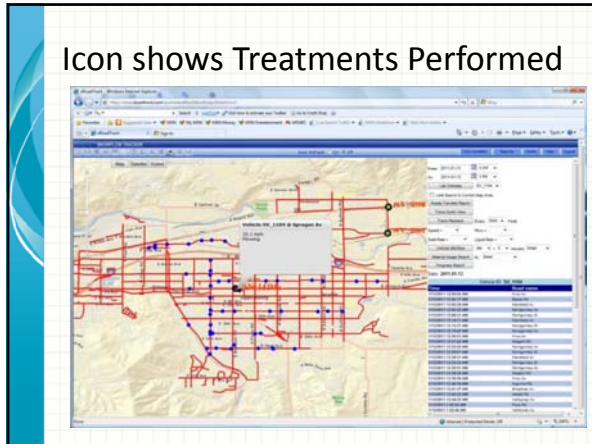
AVL System Hosted by EnterInfo

- <http://SpoWA.eRoadtrack.com>
- Access using a browser (IE7, IE8)
- Public Site Pending
<http://SpokaneValleyWA.eRoadTrack.com>

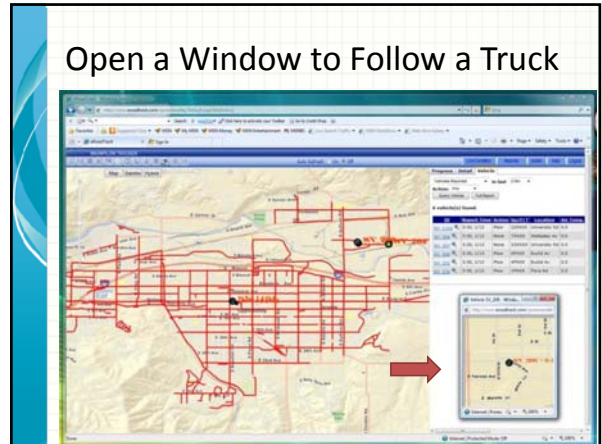
Real-time AVL and Treatments



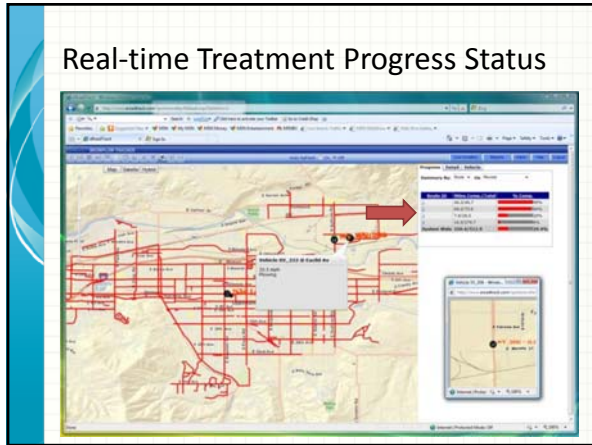
Icon shows Treatments Performed



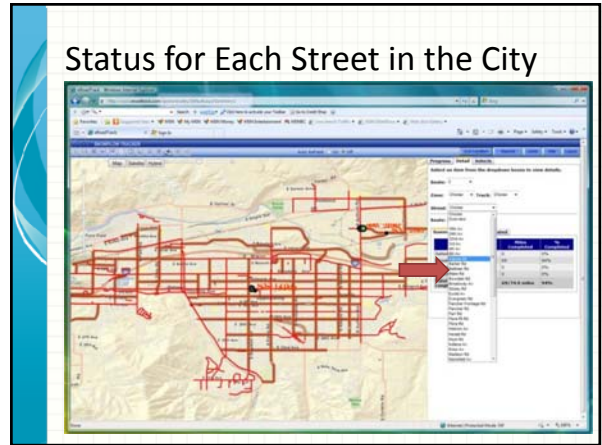
Open a Window to Follow a Truck



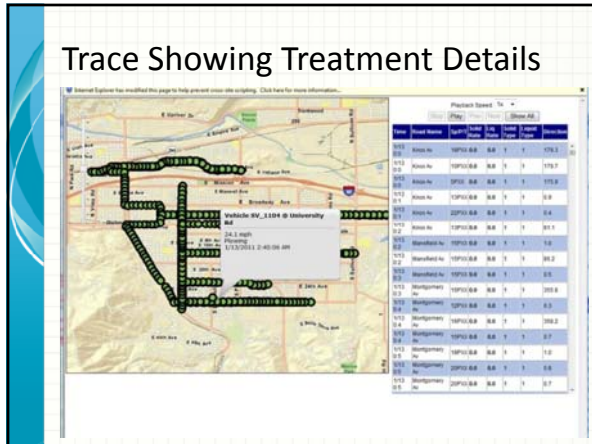
Real-time Treatment Progress Status



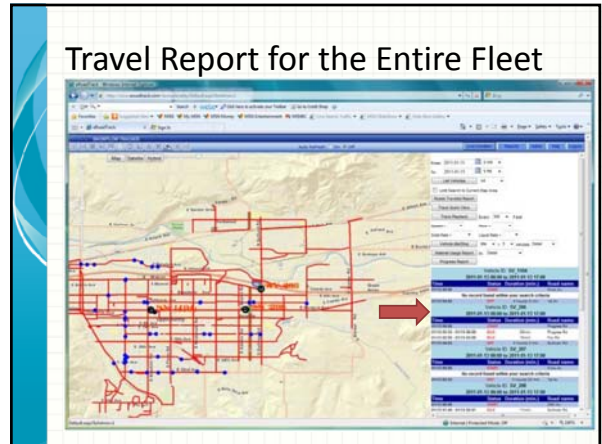
Status for Each Street in the City



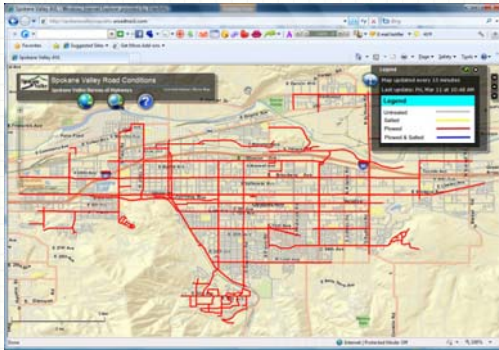
Trace Showing Treatment Details



Travel Report for the Entire Fleet



Pending Public Site



SUMMARY:

1. SUCCESS STORY – McDONALD STREET SWEEPING
2. SUCCESS STORY – GRADERS PLOWING RESIDENTIAL STREETS
3. ISSUES
 - FINDING THE RIGHT GPS THAT FINDS THE SHORT CITY ROAD SEGMENT
 - RED TRACE LINES SHOWS GAPS AND UNTREATED SIDE STREETS
4. CONTINUE TO IMPROVE THE SYSTEM ACCURACY
5. WE SEE THE GREAT REWARD

QUESTIONS?